



## **SOUTH WILTSHIRE COMMUNITY POLICING TEAM – JULY 2018**

**Sector Head:** Insp Pete Sparrow  
**Sector Deputy:** Sgt John Hutchings

Welcome to the new South Wiltshire Community Policing Team Area Board report.

You will notice that it is a little more comprehensive than you are used to, as henceforth my intention is to include the entire South Wiltshire CPT within the body of a single report. The idea is that it will give a much greater understanding of the issues facing South Wiltshire as a whole community, rather than in isolation by single area.

My policing team operate on the basis of 'One Team' and as such, resources are moved around on a daily basis according to demand. Whilst each Police Officer and our PCSO's will still retain ownership of a given area in terms of longer term problem solving approaches, the very nature of policing and answering calls for service often dictate that officers are brought together from the wider area to respond to given circumstances. This has always been and will continue to be the case.

The document is broken down in to 5 parts:

1. Introduction
2. Staffing – listed are the Community Coordinators and PCSO's for your given area.
3. Community Engagement – How to contact us and where we are due to be.
4. Particular Issues and Crime Series
5. Items of Note

As you will all know by now, with the emergency closure of Bournehill our officers had to relocate to various sites within about 36hrs. Whilst challenging, this objective was met with enthusiasm and in the main was a seamless transition with no impact on our ability to deliver our service. Whilst our resources have been separated, the One Team ethos still remains as a golden thread throughout our various departments.

The enquiry office staff have been temporarily relocated to the Library in the city centre and this has brought a new dynamic to day to day engagement with the public who might not have otherwise had cause to attend Bournehill.

The policing operation for Operation Fairline has decreased significantly over recent weeks with many of the roles being taken by private security officers. Whilst we are working with them, these staff are independent of the police and have been employed by HM Government specifically for this operation.

As a team, we have policed both the summer Solstice celebrations and immediately after the Royal visit, both of which drew significant resources from around the County and I will add a little more detail later in the report under items 4 and 5.

**Wiltshire Police - 178 years of public service – *Primus et Optimus***



## **Staffing**

With the recent changes in CPT boundaries I am proud to say that I now have available some 147 officers and staff under my command. This does not include over 40 members of our Special Constabulary. Whilst I would love to list them all, I have limited the information to the officers that make up the immediate community team whom have the closest relationships and links with our communities, those being our Community Coordinators and PCSO's. These officers are pivotal in maintaining strong working relationships with the whole community, be it business or public and they all work exceptionally hard at doing just that.

## **Salisbury**

Pc 1792 Al Cromwell - Coordinator

Pc 2398 Elle Darcy – Coordinator

PCSO 3951 Val BROWN - City Centre

PCSO 8686 Gareth JAMES - City centre

PCSO 3985 Laura KING – Southampton Road and the Friary

PCSO 8704 Kady GREEN – Castle Road and Bishopdown

PCSO 8195 Kim ORZA – Bemerton Heath

PCSO 9001 Matthew MURRAY – Churchfields and St Pauls

## **South Rural**

Pc 1157 Matt HOLLAND – Coordinator

PCSO 6227 Matt SMITH - Downton

PCSO 6314 Nicola CLARK - Wilton

PCSO 6150 Jenny MOSS – Laverstock and Old Sarum

PFCSO 6025 Simon WARD – Harnham and Odstock

## **Amesbury**

Pc 1596 Lucy WILEMAN – Coordinator

PCSO 8098 Pippa BREWER -

PCSO 3972 Levi MORPHY – Amesbury Town

PCSO 8922 David SIMONS – Tidworth and Ludgershall

PCSO 3961 Tina ROYLANCE – Shrewton



## Contact Us

**Contacting Wiltshire Police by phone –101 should be used for non-emergencies such as:**

- Reporting a non-urgent crime or incident (unless the crime or incident is in progress, when you should dial 999)
- Contacting local officers
- Making us aware of policing issues in your local area (consider email as below)
- Making an appointment with a police officer
- For any other non-emergency, such as making a complaint

**999 should be used for an emergency, when a crime is happening, someone suspected of a crime is nearby, someone is injured, being threatened or in danger.**

You can also contact local officers about non-urgent issues via **email** –

**General Community Policing enquiries** - [CPTSouthWiltshire@wiltshire.pnn.police.uk](mailto:CPTSouthWiltshire@wiltshire.pnn.police.uk)

For crime updates and local policing news via email, please sign up to our **Community Messaging** scheme at –

[www.wiltsmessaging.co.uk](http://www.wiltsmessaging.co.uk)

You can also follow us on **Facebook** – search ‘Salisbury Police’ ‘Amesbury Police’ or ‘Tidworth Police’ or on **Twitter** - @SouthWiltsCPT

## Community Engagement

This is a key area of our work and comes in many forms, from our physical presence on the traditional beat or through PULSE patrols, to our mobile and cycle patrols as well of course as our social media footprint.

Wherever possible our teams are engaging with the community at every level and one of these ways is through community consultations, where a member of staff will be made available to speak to our community on an given day and time. These consultations are a great way to meet and greet my staff that are local to you and are a great way for you to raise any issues that you may have directly with an officer or PCSO at that time.

Community Consultations will take place at the following locations over coming weeks:

Bemerton Heath Community Centre  
Waitrose, Churchill Way, Salisbury

**Wiltshire Police - 178 years of public service – *Primus et Optimus***



Dates and times will be advertised through social media and community messaging so please make sure that you follow us to receive them. Further venues across the area are being sought at the moment and if you have any event or venue suggestions please let us know via the CPT e-mail listed above and we will endeavor to be there!

### Neighbourhood Tasking Meetings

The next Tidworth/Ludgershall NTG is booked for 14.30 hours on 23rd July in Ludgershall at the Town Council Office.

The next Amesbury/Durrington/Bulford/Larkhill/ Figheldean NTG is booked for 19.00 hours on 11<sup>th</sup> July in Figheldean at the village hall.

Amesbury Rural's meeting is planned for September 2018. Date to be agreed.

### Particular Issues and Crime Series

#### Salisbury City

Bike Theft – Between 27<sup>th</sup> April 2018 and 28<sup>th</sup> June 2018 there have been approximately 22 bike thefts. Two offenders have been identified from investigations. Officers are currently progressing this and shall be making positive arrests.

Commercial Burglaries – A number of commercial premises; also including churches have been broken into over the last 2 months. Through investigation a male has been arrested and charged but released by the court on Bail pending trial, however he since gone to ground and is subsequently currently wanted by police for a recall to prison. His details have been circulated to the media via Facebook and Twitter and he also appears on Wiltshire's Most Wanted.

#### Dangerous Drug Networks (DDN's)

Despite significant disruptions through proactive policing gangs are continuing to infiltrate the south of the county peddling drugs and preying on our most vulnerable within the community. The war against drugs is a long fought one and we will continue in our efforts to disrupt activity, arrest offenders and bring them to justice whilst protecting the vulnerable in the process. Any intelligence in this regard is always welcome and can be fed in to the system via speaking to an officer or member of staff, e-mail or through **Crimestoppers on 0800 555 111**.

#### South Salisbury

Ongoing multi-agency work - in Essex Square to support 'sensitive let' scheme which has been successful in tackling issues of ASB and misuse of drugs. PCSO WARD will continue to work closely with Wiltshire Council colleagues, our Teams will support with targeted patrols and enforcement action where appropriate.



Catapult related damage and ASB – targeted patrols in response to recent report of young people using catapults to injure birds and cause damage. Hotspots include Harnham recreation ground, Town path, Middle and Lower Street.

Thefts from vehicles - Teams are carrying out targeted patrols of identified ‘hotspots’ following reports of vehicles broken into whilst parked in rural ‘beauty spot’ locations.

We’ll also continue to promote crime reduction advice, please don’t leave valuable items in vehicles when parking in these areas.

Theft of lead from buildings – We continue to receive reports of lead being stolen from buildings – typically low roofs, bay windows, porches or garages.

Our Teams are carrying out targeted patrols of hotspots – recent offences in Downton, Redlynch and Coombe Bissett.

We’ll also continue to liaise with colleagues in Hampshire and Dorset to coordinate enforcement action and visits to scrap dealers.

## **Amesbury and Tidworth**

### **Target Patrols Tidworth/Ludgershall and surrounding areas**

#### **Dewey’s Lane – Ludgershall**

Following complaints from the Community a target patrol commenced at this location, to offer reassurance and gather intelligence. The concerns were around possible drug use at the location along with anti-social behaviour. To date 7 actions have taken place.

#### **Mughal Restaurant**

An incident occurred at this location on 23<sup>rd</sup> June. The investigation is ongoing at this time. In order to offer reassurance and deal with any further criminal activity and anti-social behaviour, a target patrol commenced on 2<sup>nd</sup> June. To date 31 actions have taken place. A multi-agency meeting has been arranged for 9<sup>th</sup> July.

#### **Tidworth**

The patrols in Tidworth continue to deal with anti social behaviour and gather intelligence around drug use. This commenced on 17<sup>th</sup> April, to date 62 actions have taken place. This will be reviewed at the next NTG meeting.



### **Chrystal Palace Farm**

On 1<sup>st</sup> May additional patrols commenced at this location due to further incidents of thefts. Patrols continued until 3<sup>rd</sup> June. In total 20 actions took place.

### **Drummer Lane**

On 8<sup>th</sup> May patrols commenced in Drummer Lane following complaints of anti-social behaviour and possible drug use. The patrols continued until 2<sup>nd</sup> June. In total 28 actions took place.

### **Target Patrols Amesbury and surrounding areas**

#### **Barleycroft, The Common Shrewton**

On 8<sup>th</sup> June a target patrol was instigated at the location due to the farm being targeted. To date 23 actions have taken place..

#### **Mill Pond, Figheldean**

Due to the recent hot weather, issues at the Mill Pond have come early this year. Local residents have contacted the Police due to anti-social behaviour occurring at the location. A targeted patrol was instigated on 27<sup>th</sup> June to offer reassurance to local residents, to deal with any criminal activity. Complaints so far relate to boy racers speeding up and down Mill Road, mud throwing at resident's vehicles. Also, reports of large volumes of cars being left at the location whilst occupants use the mill pond. On Monday 02<sup>nd</sup> July a multi-agency meeting took place at the location. Present were local residents, Wiltshire Police, Parish Council. Further updates will follow. To date, 19 actions have taken place.

#### **Glebe Hall, Winterbourne Earls**

On 4<sup>th</sup> June a target patrol commenced at the location following complaints of anti-social behaviour caused by youths arriving in cars, wheel spinning, littering and causing damage to bollards etc at the location. To date 22 actions have taken place.

On 30<sup>th</sup> June a suspect has been identified for the antisocial behaviour in the car park of GLEBE HALL. Suspect and parents spoken to. After consulting with the Winterbourne Parish council, they decided that they did not wish to pursue with a prosecution for the damage caused to the bollards in the car park. Suspect has been advised that their presence in this carpark is unwelcome, and they have been advised to stay away. Since this warning, no further reports of vehicle related anti social behaviour. For this reason the patrol has been closed down on 03<sup>rd</sup> July.

### **Items of Note**

**Police and Fire Community Support Officer (PFCSO)** - Trials have started in partnership with Wiltshire and Dorset Fire and Rescue Service we have started a trial whereby PCSO Simon Ward (who also

**Wiltshire Police - 178 years of public service – *Primus et Optimus***



happens to be a retained fire officer) will be on patrol in a joint capacity enabling him to respond to both police and fire calls for service whilst on duty. Further details will be circulated at the next area board.

### **Summer Solstice**

The Solstice operation in the days leading up to the 21st saw a record reduction in policing activity for the event, with the emphasis being placed back to English Heritage to find security staff for the same. This proved very successful and a happy Solstice was had by all. Again, a first for Stonehenge was that there were no arrests at all during the event.

Woodhenge was also robustly policed following concerns from locals and partner agencies about the possibility of a Free Festival taking place and the decision was made to close Fargo Road in order to contain any further escalation of the gathering and allow for the safety of those already located there (prior to the closure) who were intoxicated and wandering around the road. This closure was key to the disruption of the planned event which despite party goers best efforts did not occur. Public engagement with those present continued throughout the 48hrs and it was apparent from the many comments received from revellers that their views of the police were greatly and positively influenced during this time. Correspondence from locals subsequently also praised the efforts of officers who worked tirelessly for extended shifts in the maintenance of communication and public order in very hot and tiring conditions.

Feedback from residents:

*"Thank you so much for all the efforts of Wilts police. Their presence and blockades resulted in an evening that one barely noticed as a resident- please do pass on my (and fellow residents) thanks for all their efforts. They clearly had a tough task, but remained professional, polite and courteous throughout. I hope this sets the precedent for future 'solstices'! Well done!"*

### **Royal Visit**

Salisbury City welcomed the Duke and Duchess of Cornwall on Friday 22<sup>nd</sup> June and the policing operation for this was significant; with 45 officers deployed across the city in various roles from search to cordons to ensure the safety of the future King. Officers who were involved with the immediate actions following the Novichock incident were honoured to meet the royal couple and share their stories. Without exception both were events that they will remember throughout their service and beyond.

Visible patrols and public engagement in Salisbury City Centre. This priority focus is on anti-social behaviour, street drinkers and disorder. CPT are working in partnership with Venture Security, BID and pub watch. It also aims to speak with rough sleepers, some of which are vulnerable in order to check on their welfare and signpost them to other agencies via [www.streetlink.org.uk](http://www.streetlink.org.uk) which triggers intervention from the local authority/outreach service who can provide help and assistance.





Officers are also making regular welfare visits to various addresses within the City Centre and the immediate surrounding area of vulnerable residents who are drug and alcohol dependent. Some of these addresses have been targeted by drug gangs from out of the area. Officers take positive action by way of arrest.

### Speed enforcement checks –

Since May, our teams have been focusing on supporting our Community Speed Watch volunteers. Areas for targeting are allocated for every 2 week period and are selected using data from active CSW schemes.

Salisbury. Bishopstone, Broadchalke, Dinton, Quidhampton and Wilton, Allington, Cholderton, Middle Woodford, Winterbourne Earls, Berwick St James, Collingbourne Kingston, Porton, Shrewton, Durrington, Steeple Langford and Larkhill have all been targeted so far.

We will continue to publicise these checks via social media.

### Selection of pictures from recent weeks.....

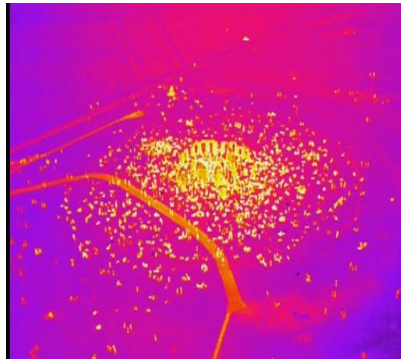
From L to R

Speed Checks / Cadets on parade / Mounted Section get new recruit / Seized vehicle no insurance / Meeting children at the leisure centre / Cadets make ready to receive Royals / First responders meet Royals / Solstice / Solstice by IR / Solstice / Speed enforcement



**Wiltshire Police - 178 years of public service – *Primus et Optimus***





**Pete Sparrow**  
**Sector Inspector South Wiltshire**